

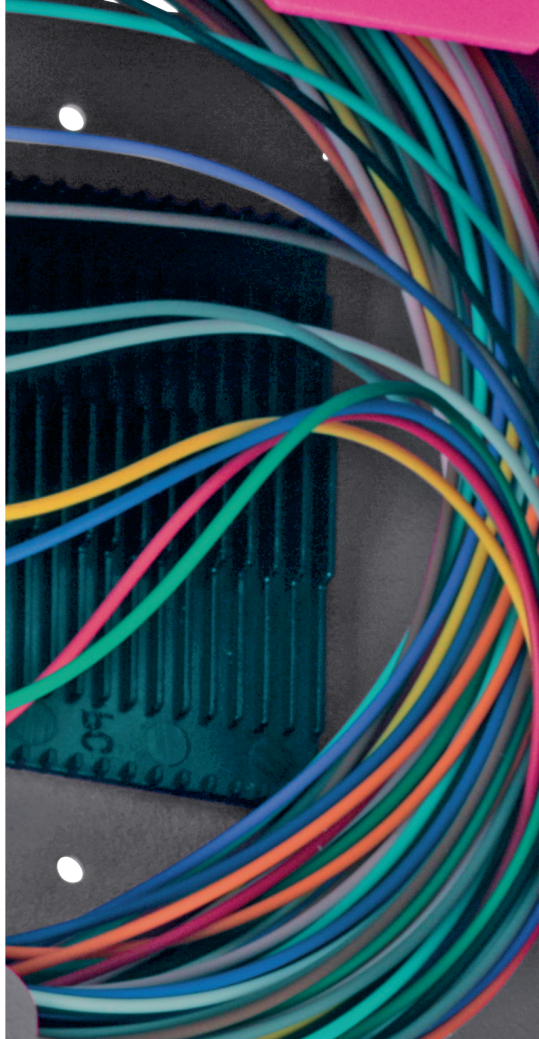


Compact. Clever. Even more comfortable.
fimp^M fiberdock

With the fimp^M fiberdock splice box, eks Engel presents an optimized solution for fiber optic distribution: Thanks to a guided insertion system and the magnetizable splice cassette, assembly is even easier.



Your added convenience –
DIN-rail splice box
fimp^M fiberdock



**eks Engel –
Building the secure data connections of the future**

We stand for progress and secure connections. This is evident both in our innovative solutions for industrial networking and in our customer-focused service as well as fair, sustainable relationships.

At our headquarters in Wenden, Germany, we develop our products for high-performance, durable communication infrastructures 'Made in Germany'. As a third-generation, family-owned company, eks Engel has been in business for 95 years. With over 40 years' expertise in fibre-optic systems, we offer reliability, quality and security for your projects.

If you need assistance, we are happy to help.

eks Engel FOS GmbH & Co. KG
Schuetzenstr. 2 | 57482 Wenden, Germany
phone + 49 2762 9313-600 | info@eks-engel.de
www.eks-engel.de



20260331

Minimal space requirement. Maximum ease of use.

Measuring just 100 × 60 × 118 mm, the DIN rail splice box fiberdock is one of the most compact splice boxes in its class. It's ideal for tight control cabinets and limited installation space. And best of all: despite its small dimensions, it offers exceptional ease of use in everyday tasks – thanks to its unique drawer mechanism.

Simply loosen a single, captive screw to pull out the drawer. The splice cassette can then be removed quickly and without tools, making it easy to work on.

This system prevents errors, saves time and offers unbeatable ease of use.

Flexible installation, variable configuration:

- Available as compact splice box or empty box
- Compatible with all standard fibre types and connector types
- Coupling variants: ST, SC, LC-Quad



Our Quality Promise
5-year warranty



SC/SC, SC/ST, LC-Quad



RoHS Label



Robust, powder-coated
stainless steel housing

Outstanding: the drawer mechanism

The base unit remains securely mounted on the DIN rail. The slide-out unit can be pulled out like a drawer – ideal for installation, servicing and retrofitting.

- Simply loosen the captive screw
- Pull out the drawer
- Remove the splice cassette without tools
- Splice cables conveniently
- All fibres remain securely in place, provided the bending radii are observed

Safe, fast and error-free.

Your benefits at a glance

- Extremely compact design
- Housing can remain on the rail
- Drawer mechanism for maximum ease of use
- Tool-free removal of the splice cassette for convenient splicing
- Powder-coated stainless steel housing – robust & durable
- Flexible configuration for any application

